



MSCI Portfolio and Risk Analytics in Charles River IMS

A Flexible, Integrated Front-to-back Solution for Portfolio and Risk Management

In today's cost-conscious environment, institutional investors can no longer afford to have multiple niche platforms across different asset classes to help them manage their multi-asset class portfolios. They need a consistent view of risk and performance across their organization, driven by analytics to bring efficiency and clarity to the entire investment cycle.

Charles River and MSCI's integrated solution is designed to provide portfolio and risk managers the ability to measure risk and performance, to identify the sources of risk and return, and to manage risk through seamlessly integrated what-if analytics which are tightly coupled to compliance rules and other relevant constraints.

Features



Drive operational efficiencies with integrated MSCI analytics directly in Charles River IMS



Access to stress testing, VaR, and risk analytics leveraging modern factor models and single security analytics



Broad asset class coverage for risk and attribution workflows



Intraday factor exposure integration for ex-ante risk

Designed to Support your Investment Process, Delivered Directly into your Existing Workflow

Charles River and MSCI provide investment and risk professionals with a common language designed to identify and communicate the sources of market, credit, liquidity, ESG and counterparty risk across asset classes, including private assets.

Charles River's portfolio management, risk and attribution capabilities coupled with MSCI's state-of-the art analytics is designed to provide portfolio and risk managers the ability to:



Measure risk and performance



Manage risk through seamlessly integrated what if analytics



Identify the sources of risk and return

Benefits



Portfolio Managers may quickly implement risk-informed investment decisions and see real-time risk impact based on proposed and executed trades.



Investment Managers may unlock operational efficiencies by leveraging a common data infrastructure across Charles River and MSCI, allowing a consistent view of risk and performance analytics across the enterprise.

Enhanced Portfolio Management Outcomes in Charles River IMS

Powered by State Street Alpha® Data Platform and MSCI

- Embedded MSCI models and single security analytics to support risk assessment when modeling portfolio changes
- Validated data with lineage and governance
- Access to historical data stored in the platform within Charles River IMS
- Improved reporting capabilities

A consistent view of risk and performance analytics across the enterprise

- Seamless access to factor models and MSCI state-of-the art analytics across risk and attribution workflows
- Portfolio construction capabilities tightly coupled with compliance
- Gain operational efficiencies by leveraging a common data infrastructure across front, middle and back office
- Management of all funds, strategies and accounts on a single enterprise platform
- Access to stress testing, VaR and risk analytics leveraging modern factor models and single security analytics
- A view of risk impact based on proposed and executed trades

Unlock Efficiencies with Charles River and MSCI

The flexibility of Charles River IMS combined with MSCI's analytics give managers a configurable multi-asset portfolio management and risk analytics solution. MSCI's innovation in risk analytics, from the modern factor model to Value-at-Risk (VaR), continuously delivers impactful risk statistics to help measure, monitor and manage risk.

MSCI Risk Analytics



Market and Reference Data

- Sourced from **~80** vendors
- Reference data for **20M+** assets, including history
- **200+** staff dedicated to data services
- Significant QA processes



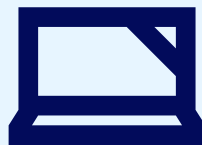
Extensive Benchmark Coverage

- Includes the following major indexes: MSCI, Bloomberg, Citigroup, ICE BofAML, Markit iBoxx, S&P Dow Jones
- 400K+ top-level and 150K+ constituent-level benchmarks indexes processed daily
- Indexes reconciled daily to **1bp** of reported returns



State-of-the-art Risk Models

- Innovative Value-at-Risk simulation methodologies
- Extensive stress tests
- Market exposure and sensitivity analysis
- Equity, fixed income and multi-asset class factor models that include privates, real assets and infrastructure



To learn more about how the Charles River and MSCI solution can help you prepare for a new era of risk management, please reach out to your sales representative to schedule a demo.



About MSCI

MSCI is a leading provider of critical decision support tools and services for the global investment community. With over 50 years of expertise in research, data and technology, we power better investment decisions by enabling clients to understand and analyze key drivers of risk and return and confidently build more effective portfolios. We create industry-leading research-enhanced solutions that clients use to gain insight into and improve transparency across the investment process. Learn more at [msci.com](https://www.msci.com).

About Charles River Development, A State Street Company

Investment and wealth managers, asset owners and insurers in over 30 countries rely on Charles River IMS to manage USD ~\$58 Trillion in assets. Together with State Street's middle and back office services, Charles River's cloud-based front office technology forms the foundation of State Street Alpha. Charles River helps automate and simplify the investment process across asset classes, from portfolio management and risk analytics through trading and post-trade settlement, with integrated compliance and managed data throughout. Charles River's partner ecosystem enables clients to access the data, analytics, application and liquidity providers that support their product and asset class mix. With a 1750+ global headcount, Charles River serves clients in 11 regional offices. Learn more at [crd.com](https://www.crd.com).

(Statistics as of Q3 2023)

About State Street Corporation

State Street Corporation (NYSE: STT) is one of the world's leading providers of financial services to institutional investors including investment servicing, investment management and investment research and trading. With \$40.0 trillion in assets under custody and/or administration and \$3.7 trillion* in assets under management as of September 30, 2023, State Street operates globally in more than 100 geographic markets and employs approximately 42,000 worldwide. For more information, visit State Street's website at [statestreet.com](https://www.statestreet.com).

* Assets under management as of September 30, 2023 includes approximately \$58 billion of assets with respect to SPDR® products for which State Street Global Advisors Funds Distributors, LLC (SSGA FD) acts solely as the marketing agent. SSGA FD and State Street Global Advisors are affiliated.

Charles River Development - A State Street Company is a wholly owned business of State Street Corporation (incorporated in Massachusetts).

This document and information herein (together, the "Content") is subject to change without notice based on market and other conditions and may not reflect the views of State Street Corporation and its subsidiaries and affiliates ("State Street"). The Content is provided only for general informational, illustrative, and/or marketing purposes, or in connection with exploratory conversations; it does not take into account any client or prospects particular investment or other financial objectives or strategies, nor any client's legal, regulatory, tax or accounting status, nor does it purport to be comprehensive or intended to replace the exercise of a client or prospects own careful independent review regarding any corresponding investment or other financial decision. The Content does not constitute investment research or legal, regulatory, investment, tax or accounting advice and is not an offer or solicitation to buy or sell securities or any other product, nor is it intended to constitute any binding contractual arrangement or commitment by State Street of any kind. The Content provided was prepared and obtained from sources believed to be reliable at the time of preparation, however it is provided "as-is" and State Street makes no guarantee, representation, or warranty of any kind including, without limitation, as to its accuracy, suitability, timeliness, merchantability, fitness for a particular purpose, non-infringement of third-party rights, or otherwise. State Street disclaims all liability, whether arising in contract, tort or otherwise, for any claims, losses, liabilities, damages (including direct, indirect, special or consequential), expenses or costs arising from or connected with the Content. The Content is not intended for retail clients or for distribution to, and may not be relied upon by, any person or entity in any jurisdiction or country where such distribution or use would be contrary to applicable law or regulation. The Content provided may contain certain statements that could be deemed forward-looking statements; any such statements or forecasted information are not guarantees or reliable indicators of future performance and actual results or developments may differ materially from those depicted or projected. Past performance is no guarantee of future results. No permission is granted to reprint, sell, copy, distribute, or modify the Content in any form or by any means without the prior written consent of State Street.

The offer or sale of any of these products and services in your jurisdiction is subject to the receipt by State Street of such internal and external approvals as it deems necessary in its sole discretion. Please contact your sales representative for further information. State Street may from time to time, as principal or agent, for its own account or for those of its clients, have positions in and/or actively trade in financial instruments or other products identical to or economically related to those discussed in this communication. State Street may have a commercial relationship with issuers of financial instruments or other products discussed in this communication.

©2023 STATE STREET CORPORATION