

# Transaction Cost Analysis

## Understanding Trade Execution Impact

Transaction Cost Analysis (TCA) lets investment managers determine the effectiveness of their portfolio transactions. By providing greater transparency into investment strategies and trading performance, TCA helps investment managers lower their trading costs. The Charles River Investment Management Solution (CR IMS) provides TCA seamlessly integrated with order, execution and portfolio management capabilities. Charles River's TCA scales with your analytics needs, from pre-trade to post-trade capabilities. Pre-trade TCA is included as standard functionality in Charles River IMS.

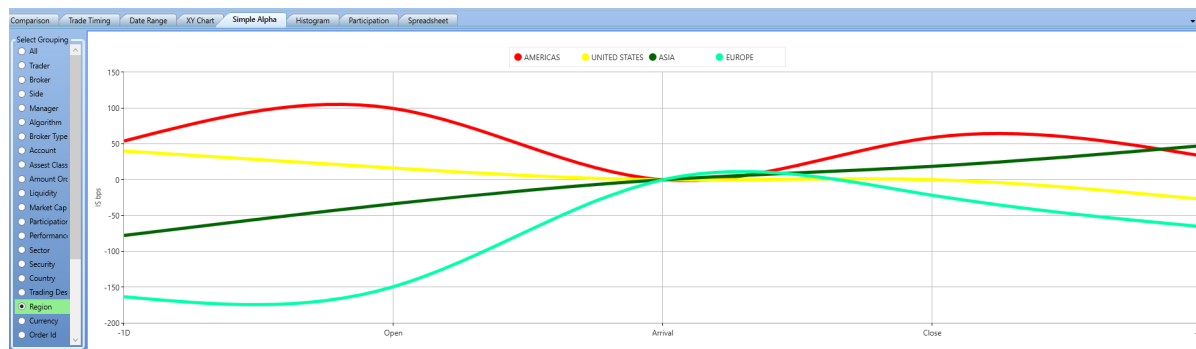
### Real-Time Decision Support

Charles River's integrated TCA capability produces immediately actionable intelligence, accessible directly from the blotter. Extensive reporting and visualization options provide portfolio managers and traders with highly individualized feedback, helping them improve performance and reduce slippage. For example, Charles River TCA provides insight into questions such as:

- Which algorithm is working for me?
- What's my optimal execution rate?
- Should I use crossing networks for my orders?
- Do my orders differ by time of day, order size, sector, PM?

### Key Benefits

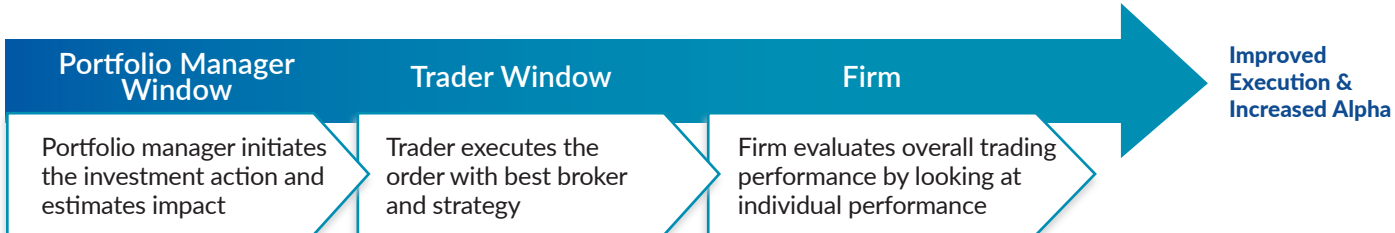
- Evaluate trading costs and trends on one platform
- Measure the performance of portfolio managers, traders & brokers
- Make more informed trading decisions
- Helps improve quality of trade execution
- Can reduce execution costs and slippage
- Seeks to maximize alpha



Generate performance profiles in Charles River TCA to understand factors impacting trade costs.

### Advanced Capabilities

- Pre- and post-trade analytics application
- Multi-agent perspective on order life-cycle
- Best-in-class customized reporting
- Optimize trading strategies to fit PM and trader profiles
- Align behavioral profiles with implementation strategies
- Covering: Global Equity Markets, US/Canada inter-listed, EU composite
- Supports entire order life-cycle
- Real-time implementation shortfall
- Real-time unrealized gain/loss (UGL)
- %ADV and liquidity indicators
- UI-based research tool



Charles River's TCA helps portfolio managers, traders and buy-side firms understand trade execution impact throughout the trade lifecycle.

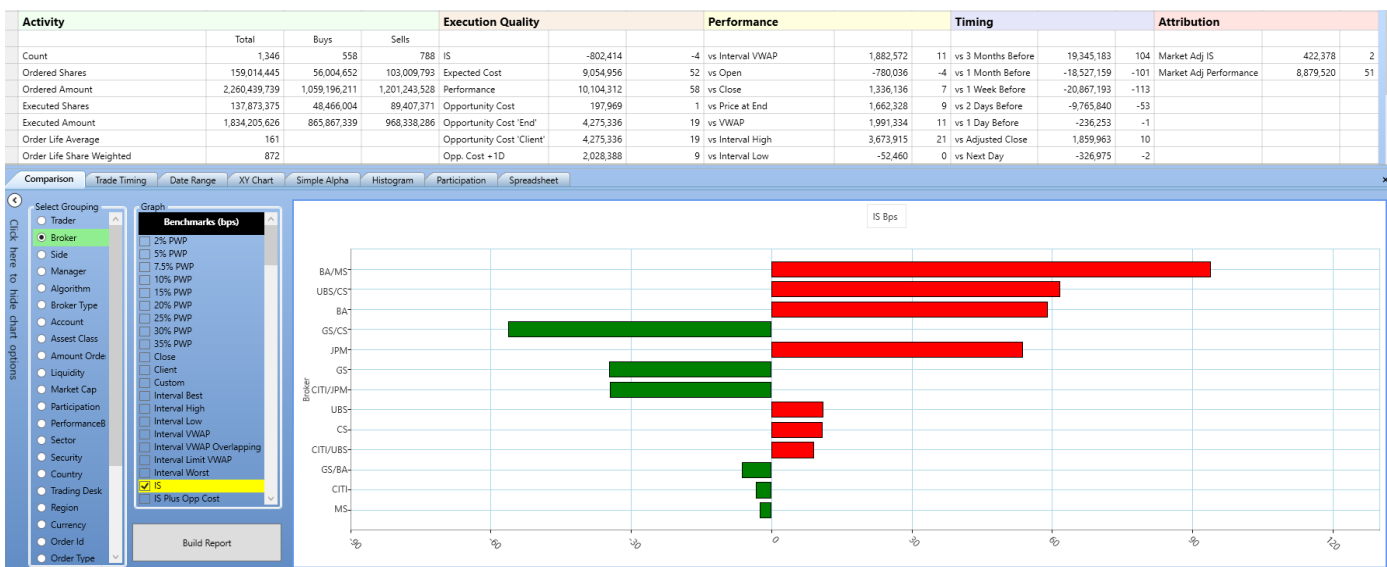
## Pre-Trade TCA

Pre-Trade TCA provides portfolio managers with estimates of trade costs and market impact based on extensive historical trade information for a particular name. It evaluates all relevant trade execution strategies and recommends the strategy that is most consistent with a manager's risk preferences.

Current User's Active Equity Orders (197)												
Status	Side	Name	Tgt Qty	Tgt Amt	Trd Curr	Total Cost	Total Cost (bps)	Spread Cost (bps)	Price Impact Cost (bps)	Standard Deviation	Trader	Mgr
Work	Buy	GOOG	110,000	65,919,700	US	204,094.23	30.961	2.325	28.636	64.822	TJ	TMDEV
Work	Buy	BBD/B	4,017,613	16,391,861	CA	176,899.11	107.919	20.391	87.527	161.324	TJ	TMDEV
Work	Buy	CASY	86,996	4,890,915	US	38,768.62	79.267	10.045	69.222	58.755	TMDEV	TMDEV
Work	Buy	EBAY	370,383	8,781,781	US	36,875.69	41.991	1.684	40.307	41.423	TMDEV	TMDEV
Work	Buy	APA	88,470	7,316,469	US	16,891.68	23.087	1.691	21.396	107.496	TMDEV	TMDEV
Work	Buy	RY CN	100,000	5,350,000	CA	4,251.96	7.948	0.692	7.255	47.838	TMDEV	TMDEV
Open	Buy	ADSK	80,500	3,151,575	US	3,721.85	11.809	0.920	10.889	86.772	TJ	TMDEV
Open	Buy	AAPL	100,000	10,819,000	US	2,431.09	2.247	0.500	1.747	35.023	TMDEV	TMDEV
Work	Sell	AAPL	83,960	8,785,566	US	1,881.85	2.142	0.504	1.638	34.737	TMDEV	TMDEV

## Post-Trade TCA

Post-Trade TCA helps firms and portfolio managers profile and analyze trader performance across numerous metrics. Users can assess trade execution quality by comparing actual executed prices to user-selected benchmark prices. A full suite of benchmarks are provided, including volume-weighted average price, opportunity cost, performance, open/close/previous close price. Custom benchmarks are also supported.





A State Street Company

## ABOUT CHARLES RIVER

**Charles River Development, a State Street Company, enables sound and efficient investing across all asset classes. Investment firms in more than 40 countries use Charles River IMS to manage more than US\$25 Trillion in assets in the institutional investment, wealth management and hedge fund industries. Our Software as a Service-based solution (SaaS) is designed to automate and simplify investment management on a single platform – from portfolio management and risk analytics through trading and post-trade settlement, with integrated compliance and managed data throughout. Headquartered in Burlington, Massachusetts, we support clients globally with more than 750 employees in 11 regional offices.**

---

Charles River Development - A State Street Company is wholly owned business of State Street Corporation (incorporated in Massachusetts).

This document and information herein (together, the "Content") is subject to change without notice based on market and other conditions and may not reflect the views of State Street Corporation and its subsidiaries and affiliates ("State Street"). The Content is provided only for general informational, illustrative, and/or marketing purposes, or in connection with exploratory conversations; it does not take into account any client or prospects particular investment or other financial objectives or strategies, nor any client's legal, regulatory, tax or accounting status, nor does it purport to be comprehensive or intended to replace the exercise of a client or prospects own careful independent review regarding any corresponding investment or other financial decision. The Content does not constitute investment research or legal, regulatory, investment, tax or accounting advice and is not an offer or solicitation to buy or sell securities or any other product, nor is it intended to constitute any binding contractual arrangement or commitment by State Street of any kind. The Content provided was prepared and obtained from sources believed to be reliable at the time of preparation, however it is provided "as-is" and State Street makes no guarantee, representation, or warranty of any kind including, without limitation, as to its accuracy, suitability, timeliness, merchantability, fitness for a particular purpose, non-infringement of third-party rights, or otherwise. State Street disclaims all liability, whether arising in contract, tort or otherwise, for any claims, losses, liabilities, damages (including direct, indirect, special or consequential), expenses or costs arising from or connected with the Content. The Content is not intended for retail clients or for distribution to, and may not be relied upon by, any person or entity in any jurisdiction or country where such distribution or use would be contrary to applicable law or regulation. The Content provided may contain certain statements that could be deemed forward-looking statements; any such statements or forecasted information are not guarantees or reliable indicators for future performance and actual results or developments may differ materially from those depicted or projected. Past performance is no guarantee of future results. No permission is granted to reprint, sell, copy, distribute, or modify the Content in any form or by any means without the prior written consent of State Street.

The offer or sale of any of these products and services in your jurisdiction is subject to the receipt by State Street of such internal and external approvals as it deems necessary in its sole discretion. Please contact your sales representative for further information.

©2018 STATE STREET CORPORATION